

Douglas

Hinterland



Artist Impression



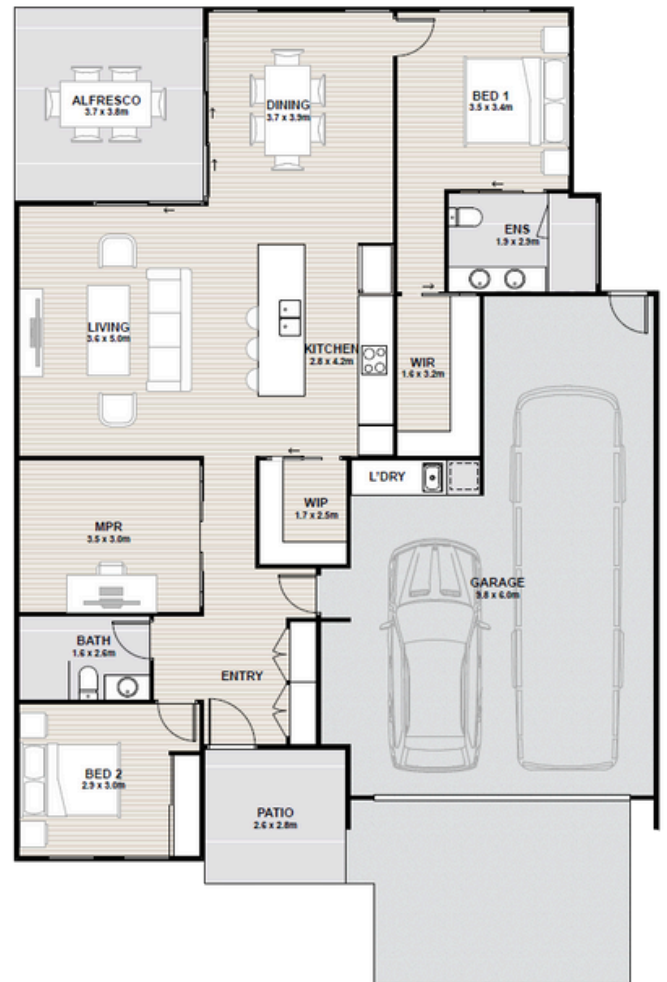
FLOORSPACE

Area based on external wall footprint

Living	124.4m ²
Alfresco	14.5m ²
Garage	56.5m ²
Porch	7.5m ²
Total	202.9m ²

Designed for those with a spirit of adventure, Douglas is an entertainer's dream.

- The double garage and dedicated RV space is perfect for the seasonal traveller
- Spacious open-plan living and dining space that opens to the outdoor alfresco
- Generous master bedroom featuring a double-vanity ensuite and walk-in-robe
- Kitchen features a walk-in pantry, freestanding island bench and quality European appliances
- Central bathroom with floor-to-ceiling tiling
- Built-in laundry, conveniently located in the garage
- Ceiling fans, solar system and air-conditioning throughout



Artist impression. Not to scale and subject to change and approvals.

Thyme Lifestyle Resort Palm Cove
71 Williams Esplanade, Palm Cove 4879

Kel Cooper
Sales Consultant
0455 143 981

palmcove.thyme.com.au

1300 120 444 | palmcove@thyme.com.au

THYME
LIFESTYLE RESORT

PALM COVE