

Home Design Collection



Artist Impression

THYME
LIFESTYLE RESORT

PALM COVE

Homes crafted for ease, style and everyday living.

Each home at Thyme Palm Cove is built with comfort, quality and energy efficiency in mind.

Purposefully curated, every residence is a mix of beauty and practicality. Choosing a home at Thyme Palm Cove is choosing generous spaces, premium finishes and thoughtful touches. Light-filled and seamlessly immersed in the natural surrounds of Palm Cove, Thyme Lifestyle Resort allows you to truly be in your element.



Ellis

A DESIGN FULL OF SURPRISES



Facade scheme: Coastal White

Artist Impression



Facade scheme: Grey Mist

Artist Impression

2 | 2 | 1.5

FLOORSPACE

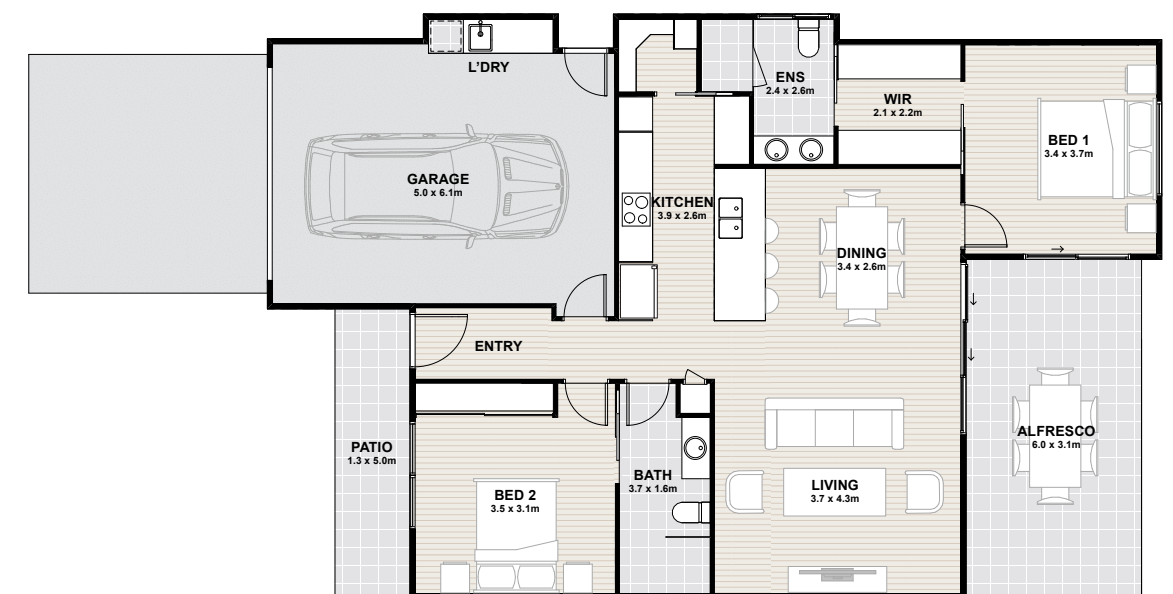
Area based on external wall footprint

Living	93.7m ²
Alfresco	18.4m ²
Garage	30.4m ²
Porch	6.7m ²
Total	149.2m ²

Bright and beautifully appointed, Ellis embraces the essence of coastal living with its breathable, open plan design and covered alfresco.

A kitchen perfected for the dedicated home cook features a generous walk-in pantry, quality appliances and stone benchtops. The single garage conveniently connects you from the home to the laundry, delivering on presentable practicality in your every day.

Retreat to the generous master suite, complete with a double-sided walk-in robe and elegant ensuite. A sliding door opens to the undercover alfresco, inviting a refreshing, cool breeze to gently drift through.



Artist impression. Not to scale and subject to change and approvals.

Trinity

OPENNESS BALANCED WITH INTIMACY



Facade scheme: Coastal White

Artist Impression



Facade scheme: Grey Mist

Artist Impression

2 1 2 2

FLOORSPACE

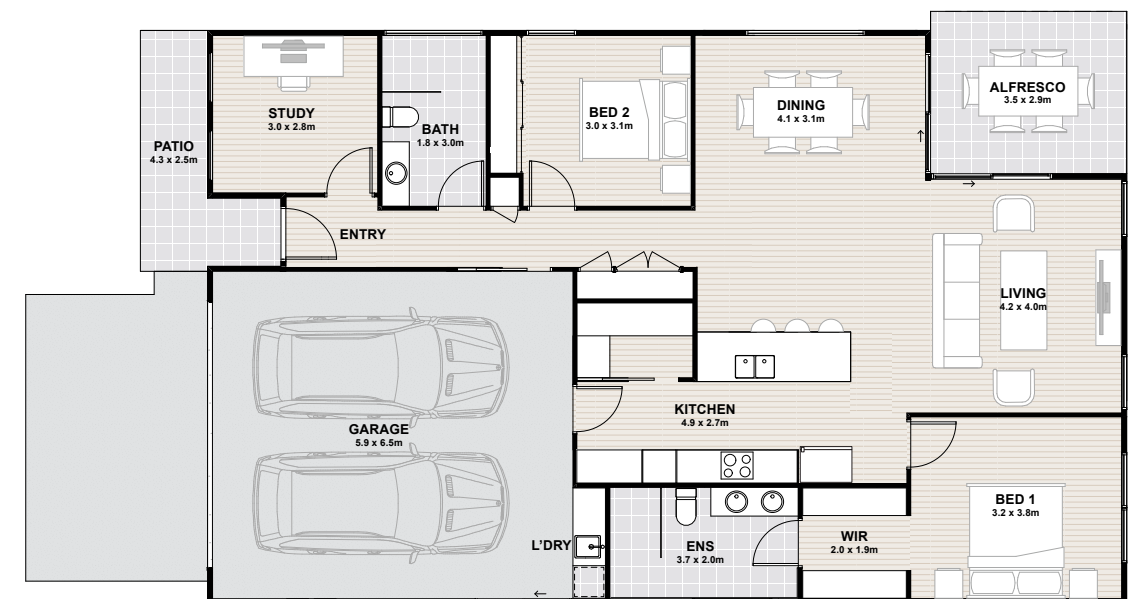
Area based on external wall footprint

Living	120.7m ²
Alfresco	10.5m ²
Garage	41.8m ²
Porch	7m ²
Total	180m ²

Achieve a truly connected home with the open kitchen, living, dining and alfresco spaces of Trinity, where every area flows effortlessly into the next.

A home designed with generous proportions, the two spacious bedrooms, double vanity in the master bedroom and double garage with a built-in laundry ensure you find an elevated comfort in every day.

Meanwhile, the private study is suited to focused work or quiet downtime. With ample storage and light-filled, open spaces, Trinity offers the best of both polish and practicality.



Artist impression. Not to scale and subject to change and approvals.

Luca

AN ENTERTAINER'S DREAM



Facade scheme: Coastal White

Artist Impression



Facade scheme: Hinterland

Artist Impression

2 1 2 2

FLOORSPACE

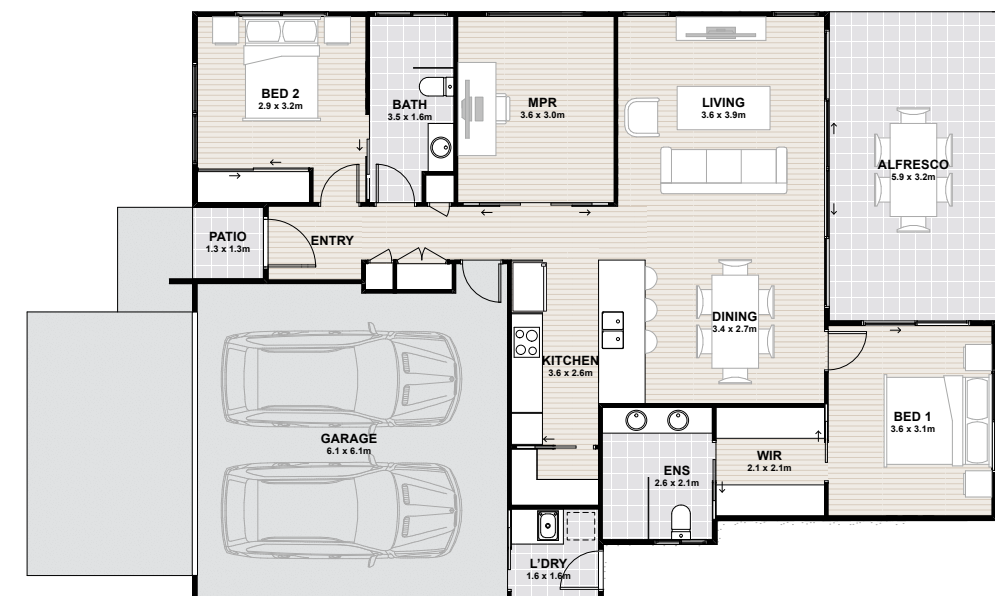
Area based on external wall footprint

Living	106.7m ²
Alfresco	19.2m ²
Garage	38.6m ²
Porch	4.8m ²
Total	169.3m ²

Designed to be light-filled and alive with warmth, Luca's open plan living, generous kitchen and expansive alfresco invite connection with neighbours, friends and family alike.

Featuring a walk-in pantry, generous multipurpose room and seamless connectivity from the double garage through to the laundry and outdoor line, Luca is designed for seamless movement and liveability.

A home for the entertainer, you are spoilt with space when hosting your guests. The large multipurpose room adapts to your lifestyle. Style it as a guest bedroom, study, creative retreat or sanctuary of your own making.



Artist impression. Not to scale and subject to change and approvals.

Azura

INFUSED WITH LIGHT AND WARMTH



Facade scheme: Coastal White

Artist Impression



Facade scheme: Hinterland

Artist Impression



FLOORSPACE

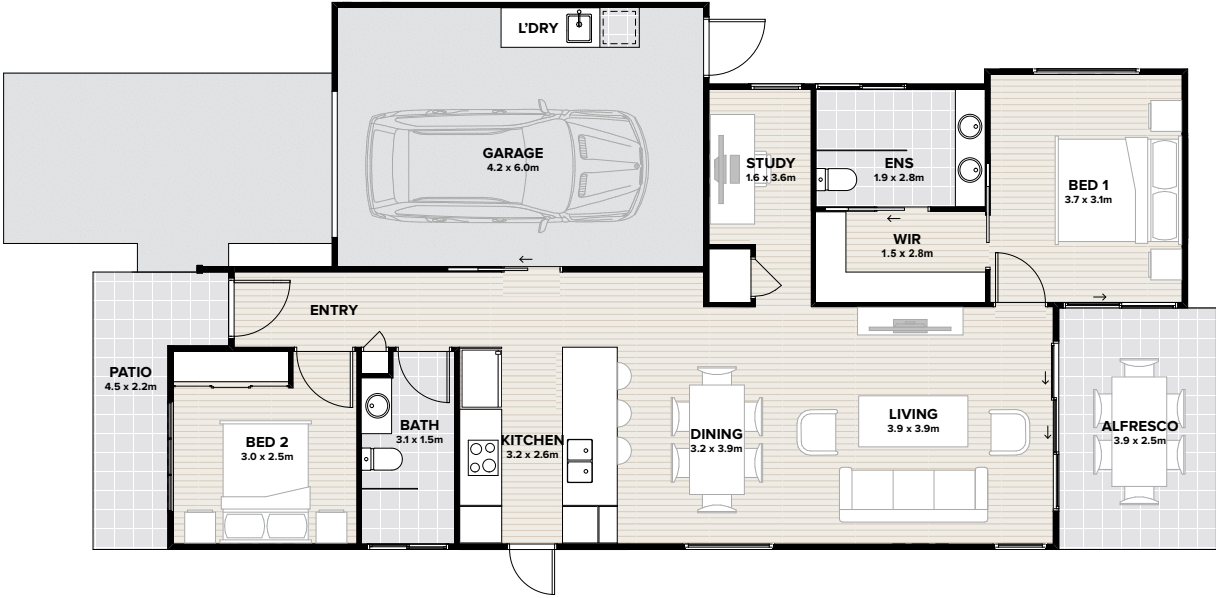
Area based on external wall footprint

Living	92.4m ²
Alfresco	10.1m ²
Garage	27.4m ²
Porch	6.5m ²
Total	136.4m ²

Thoughtfully appointed and effortlessly elegant, Azura is complete with everything you need for a life of ease.

Oversized spaces abound. The home offers a generously sized second bedroom with built-in robe, a central bathroom, and open plan living and dining. The kitchen is practical and light-filled, featuring a stunning skylight. A separate study adds flexibility without compromise, while the built-in laundry, conveniently located in the garage, enhances everyday functionality.

Retreat at the end of the day to your master suite and unwind. From the double-vanity ensuite, step through the master bedroom and past the walk-in-robe and beyond into the alfresco area. Here, light, air and a hint of a sea breeze make your home a coastal retreat.



Artist impression. Not to scale and subject to change and approvals.

Crystal

COSINESS MEETS FUNCTIONALITY



2 1 2 1

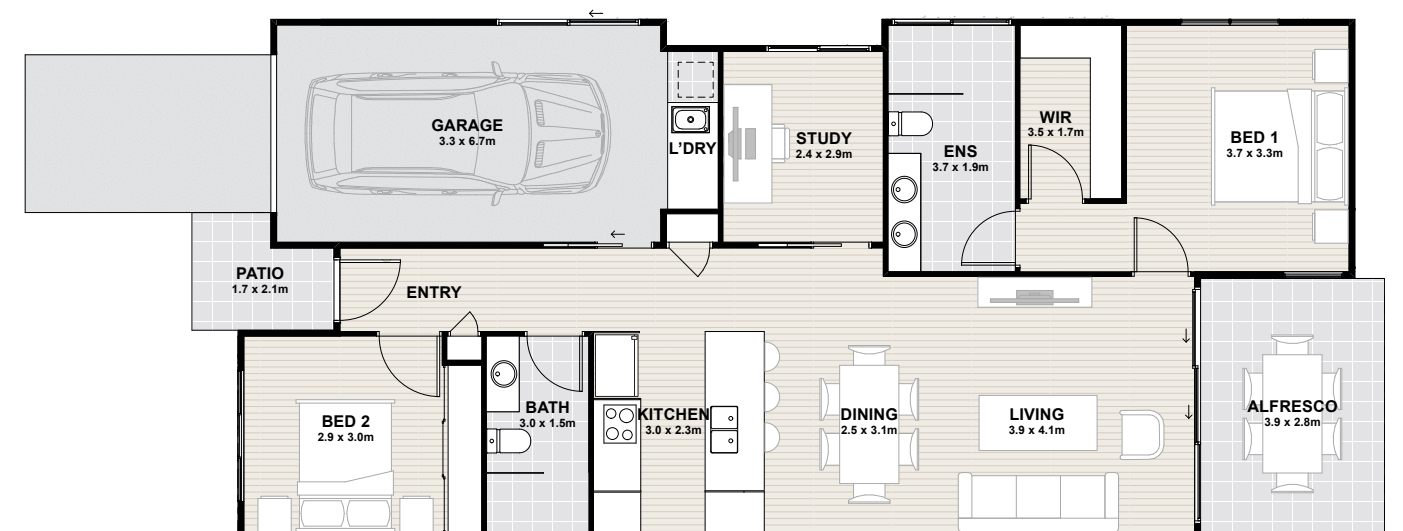
FLOORSPACE

Area based on external wall footprint

Living	98.9m ²
Alfresco	9.1m ²
Garage	21.2m ²
Porch	3.4m ²
Total	132.6m ²

This charming residence features two comfortable bedrooms, with the master featuring a walk-in-robe and generously sized ensuite with a double vanity. A versatile study accommodates a quiet retreat for work or leisure, and the home's practicality is enhanced by a central bathroom and single garage that connects to the laundry and outdoor line.

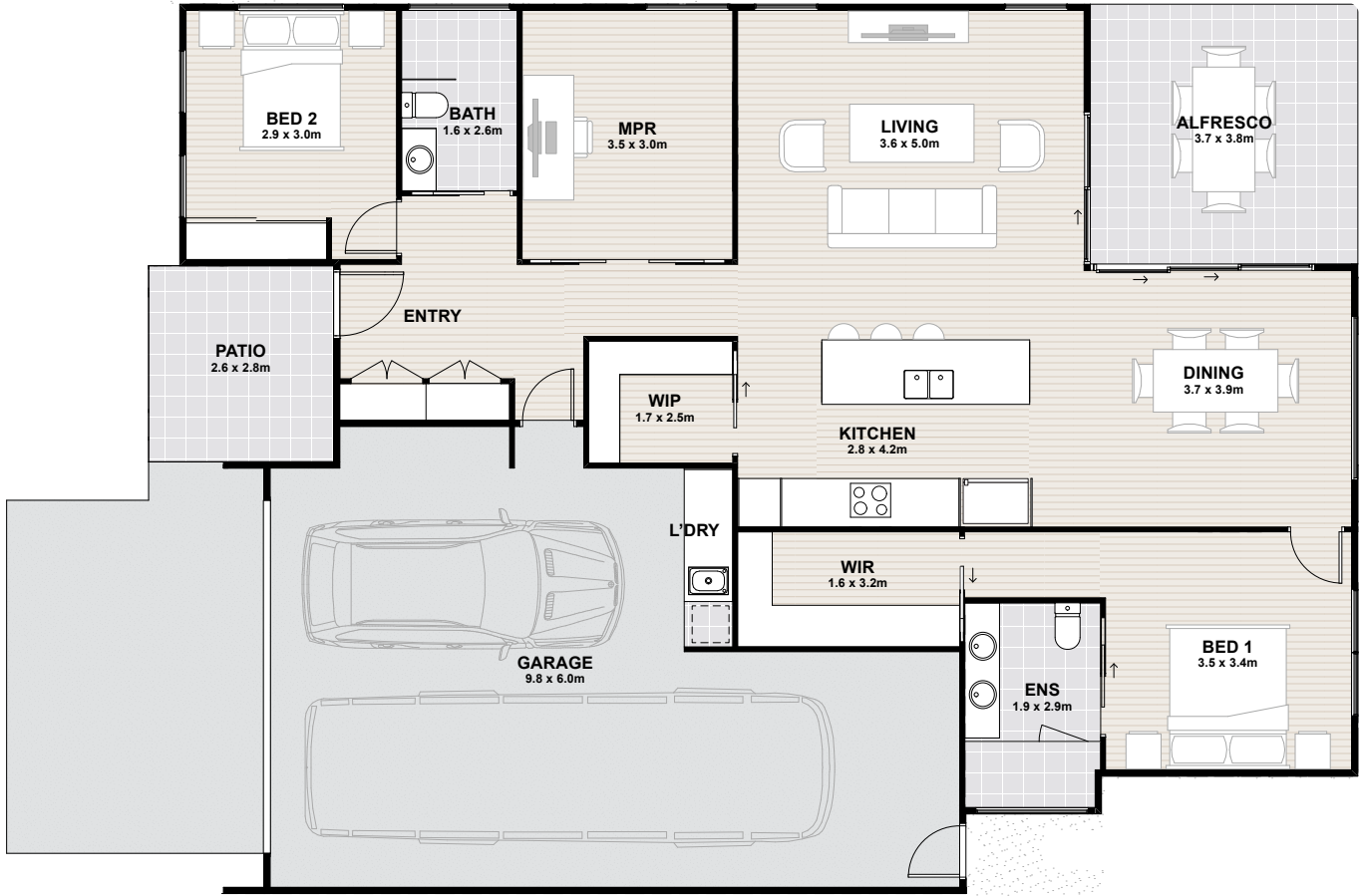
At its heart, Crystal radiates warmth and serenity, with the open plan living, dining and kitchen connecting seamlessly and making it an ideal choice for those seeking a comfortable and inviting living environment.



Artist impression. Not to scale and subject to change and approvals.



Facade scheme: Hinterland
Artist Impression



Artist impression. Not to scale and subject to change and approvals.

2

2

1

1

1

FLOORSPACE

Area based on external wall footprint

Living	124.4m ²
Alfresco	14.5m ²
Garage	56.5m ²
Porch	7.5m ²
Total	202.9m ²

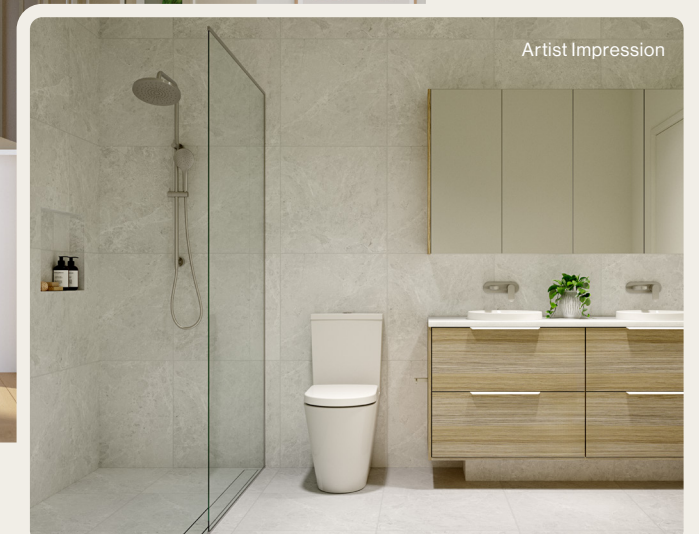
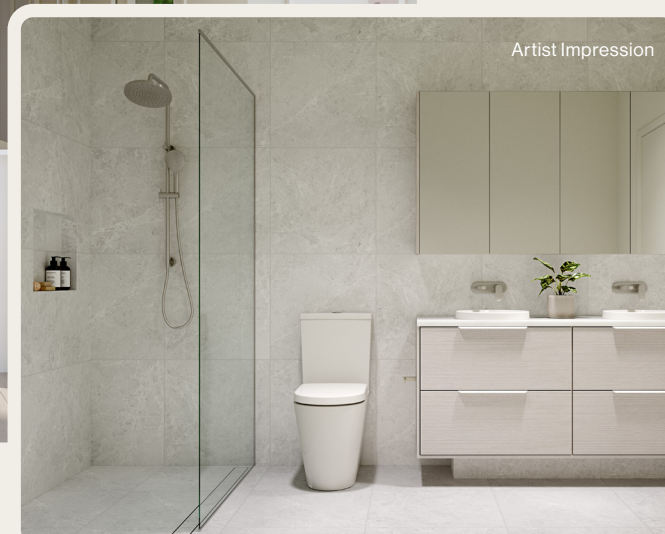
Make no compromises; Douglas offers generous proportions and abundant storage throughout. An entertainer's dream, it features a walk in pantry, freestanding kitchen island bench and spacious study that can be transformed into a third bedroom for visitors.

The dining space opens to the outdoor alfresco, creating an effortless transition between inside and out.

Designed for those with a spirit of adventure, its double garage and dedicated RV space invite the natural explorer to lock up and leave and then be welcomed home to tranquillity.

Internal Colour Schemes

Interiors are light-filled with high ceilings, quality flooring and a choice of modern colour schemes. All homes and community buildings are purposefully designed to blend with Thyme Palm Cove's coastal surroundings, creating living spaces that are both beautiful and practical.



Standard Inclusions

EXTERNAL DESIGN

External colour schemes are predetermined by project architect

INTERNAL DESIGN

Choice of 3 internal colour schemes (subject to building progress):
– Cove – Sand – Shell

EXTERIOR

- Architecturally designed, energy-efficient home
- Engineered concrete slab on ground with termite protection
- Timber frame including engineered trusses
- Colorbond roof, fascia & guttering
- Roof blanket insulation under colorbond roof
- External walls insulated
- Painted lightweight cladding
- Feature front entry door with lockable lever
- Powder-coated aluminium frame windows & sliding doors
- Flyscreens to all openable windows
- Security mesh screen door to front entry door
- Façade house numbering
- Colorbond fence with secure gate
- Foldable wall-mounted clothesline to rear yard
- Front & rear garden hose taps
- Landscaped garden to front façade

INTERNAL GENERAL

- 2700mm nominal ceiling height throughout
- Cornice installed throughout (excluding square set to bathroom & ensuite)
- 2040mm high flush panel internal doors throughout
- Satin Chrome hardware to internal doors
- Door stops to internal doors
- Skirting & architraves painted throughout, with wet areas fitted with tiled skirting
- Linen cupboard/s with melamine shelving - design specific
- Broom cupboard with open storage -design specific
- Plantation shutters to front façade windows

KITCHEN

- Quality stainless steel appliances:
 - 600mm induction cooktop
 - 600mm oven
 - Integrated rangehood
 - 600mm freestanding dishwasher
- 20mm engineered stone benchtops
- Island benchtop with 20mm engineered stone waterfall end panel/s
- Laminate cabinetry design to selected internal colour scheme
- Soft close drawers & cupboards throughout
- Specified cabinetry handles to undercounter cabinetry, finger-pull to overhead cabinetry
- Undermount stainless steel sink with sink mixer
- Pull-out bin system
- Feature tile splash back
- Pendant lighting over island benchtop
- Plumbing connection point to fridge space
- Large pantry cupboard or walk in pantry - design specific

BEDROOMS

- Walk-in-robe to master bedroom with hanging rail, top shelf & shelving tower
- Robes to secondary bedroom/s with hanging rail, top shelf & shelving tower
- Ceiling fans to all bedrooms
- TV point to master bedroom

BATHROOMS / ENSUITE

- 20mm stone benchtops with custom laminate vanity unit
- Specified cabinetry handles
- Semi-inset basin with wall mounted basin mixer & outlet
- Mirrored shaving cabinet to ensuite & bathroom
- Walk in showers with frameless glass panel - design specific
- Enclosed semi-frameless shower screen & door - design specific
- Floor to ceiling tiles to shower & vanity unit wall
- Tiled shower niche to all showers
- Dual shower head on rail to all showers
- Double towel rail & hand towel rail
- Easy height toilet suite & toilet roll holder
- Exhaust fan to shower vicinity & LED downlights
- Wall support for future grab rail installation - location design specific

LAUNDRY

- 20mm engineered stone benchtop
- Laminate cabinetry design with stainless steel sink & mixer
- Specified cabinetry handles
- Tiled splashback
- Washing machine tap & drainage outlet for hose connection provided
- Direct access provided to external drying area
- Wall noggins above washing machine for future installation of dryer

ALFRESCO

- Sliding door access from house to alfresco
- Ceiling fan & LED downlights
- Waterproof power point

FLOORING

- Vinyl flooring throughout including bedrooms
- Floor tiles to ensuite, bathroom & laundry
- External floor tiles to alfresco & porch

GARAGE/DRIVEWAY

- Step free entry from garage to house
- Plain concrete garage flooring
- Panel lift garage door with remote controls
- Garage Panel Lift door height 2300mm nominal
- RV Garage Panel Lift door height 3600mm nominal - design specific
- Plain concrete driveway & paths

TECHNOLOGY/SERVICES

- Split systems to main living & bedrooms, including enclosed study or multi-purpose room.
- 160L electric hot water unit
- Solar system
- LED downlights throughout.
- Double power points throughout - location as per electrical plan
- TV point to living room & master bedroom
- Hardwired interconnected smoke detection with battery back-up
- Ceiling fans to main living & dining areas, bedrooms & enclosed study or multipurpose room
- High speed internet ready
- Electricity & water services individually metered & connected

*Subject to approval of relevant authorities.

Optional Upgrade Packages

KITCHEN, BATHROOM, ENSUITE & LAUNDRY STONE BENCHTOPS UPGRADE

Upgrade to YDL stone colour Kalala Bianco to all benchtops, including kitchen, bathroom, ensuite, laundry and walk-in pantry if applicable

STONE SPLASHBACK

Option 1: Rosmee Stone Upgrade 20mm stone splashback to kitchen only in YDL stone colour Rosemee

Option 2: Rosmee Stone Upgrade 20mm stone splashback to kitchen & walk-in pantry in YDL stone colour Rosemee

Option 1: Kalala Bianco Stone Upgrade 20mm stone splashback to kitchen only in YDL stone colour Kalala Bianco (applies when stone benchtop has also been upgraded to Kalala Bianco)

Option 2: Kalala Bianco Stone Upgrade 20mm stone splashback to kitchen and walk-in pantry in YDL stone colour Kalala Bianco (applies when stone benchtop has also been upgraded to Kalala Bianco)

TAPWARE

Upgrade to Nobili Flag gooseneck pull down sink mixer to kitchen or/and laundry in lieu of inclusions range sink mixer

APPLIANCES

Upgrade to Bosch pyrolytic self-cleaning built-in oven in lieu of inclusion range Bosch oven

Bosch built-in microwave with trim kit

FLOORING

Dawson Falls 100% wool loop pile carpet to all bedrooms, replacing standard vinyl flooring

Two colour options available:
– Meadow – Cascade

BLIND PACKAGE

Option 1: Plantation shutters to all remaining windows throughout home to match front façade windows

Option 2: Block-out roller blinds to all remaining windows. With the option to add matching sunscreen blinds.

Option 3: Panel glides to sliding doors

Option 4: Block-out roller blinds to hinge external doors. With the option to add matching sunscreen blinds

SECURITY SCREEN DOORS:

Security mesh screen doors to external sliding doors

GARAGE FLOORING

Upgrade to epoxy flooring to garage in lieu of plain concrete

Product availability and materials may change without notice. Serenitas reserves the right to offer alternate products or cancel upgrades and revert to standard inclusions at its discretion. Refer to your contract for full inclusions

An artistic rendering of a modern residential development. The scene features several white, single-story houses with large windows and flat roofs. In the foreground, there are lush green lawns, several tall palm trees, and a large, leafy tree. Two cars are parked on a paved area: a silver SUV and a white SUV. The sky is a clear, light blue with a few wispy clouds. The overall atmosphere is bright and sunny, suggesting a warm, coastal environment.

Live life at your pace.

Positioned on the cusp of city and sea, Thyme Palm Cove is a unique blend of nature, freedom and connection.

It's a place where neighbours become friends, you can choose the lifestyle you want, and a genuine sense of belonging is part of everyday life.

If you're ready to make the move, we're here to welcome you home.

Thyme Palm Cove Sales Office

71 Williams Esplanade, Palm Cove, QLD 4879

palmcove.thyme.com.au

1300 120 444 | palmcove@thyme.com.au

Serenitas endeavours to ensure all information provided is correct as at October 2025. Whilst every effort is made to accurately represent Thyme Lifestyle Resort Palm Cove, these may change in the future without notice. Images are artistic impressions only and should not be regarded as representation of fact. Please contact Thyme Lifestyle Resort Palm Cove for further information.